



54C Mint Street East Victoria Park WA

3 2 2

Perfectly positioned, in a fantastic urban precinct, this well appointed Double-storey home meets all the convenience, comfort and contemporary lifestyle dreamed for. You and your family will be delighted to live in and enjoy the most of Vic Park - popular local and new amenities; all of them within walking distance to Cafes-restaurants, parklands, shops, schoolings, stadium, public transport (bus and train) and easy access to Curtin University and inner city features.

On 253sqm Green Title block and 152sqm internal living area, this gorgeous home boasts a functional ground floor and practical upper level. As you walk in, the lovely and easy-care front garden welcoming you into your new home, a separate formal lounge with French doors, spacious and bright living & dining area equipped with a split system aircon from where you can access the private

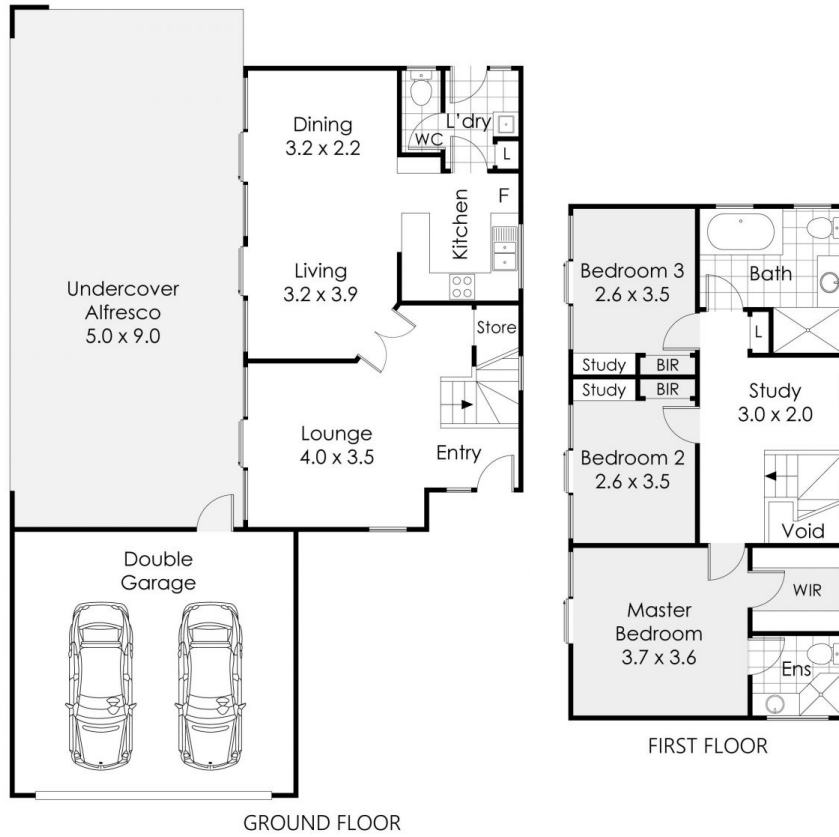
Building Size : 132 sqm
Land Size : 253 sqm
View : <https://www.lauriekelly.com.au/sale/wa/southern-suburbs/east-victoria-park/residential/house/7936563>



Franklin Martinez
 08 9277 4200



Laurie Kelly
 08 9277 4200



54C Mint Street, East Victoria Park

This floor plan is not to scale.
Dimensions are approximate and therefore should only be used for illustrative purposes.

	152 m ²
	3 Bed
	2 Bath
	2 Car