



11/169 Great Eastern Highway Belmont WA

1 1 1

Riverside 1 bed Ground Floor Unit

Auction Location: On-Line

OPENN NEGOTIATION (FLEXIBLE) LIVE ONLINE AUCTION

Final bidding stage for approved bidders only this Wednesday 27th March 2024 @ 18.30pm

** Log into OPENN.COM.AU and register to observe and watch it LIVE for free**

** You MUST be qualified to bid! Contact Kim Findlay to find out how**

Building Size : 49 sqm

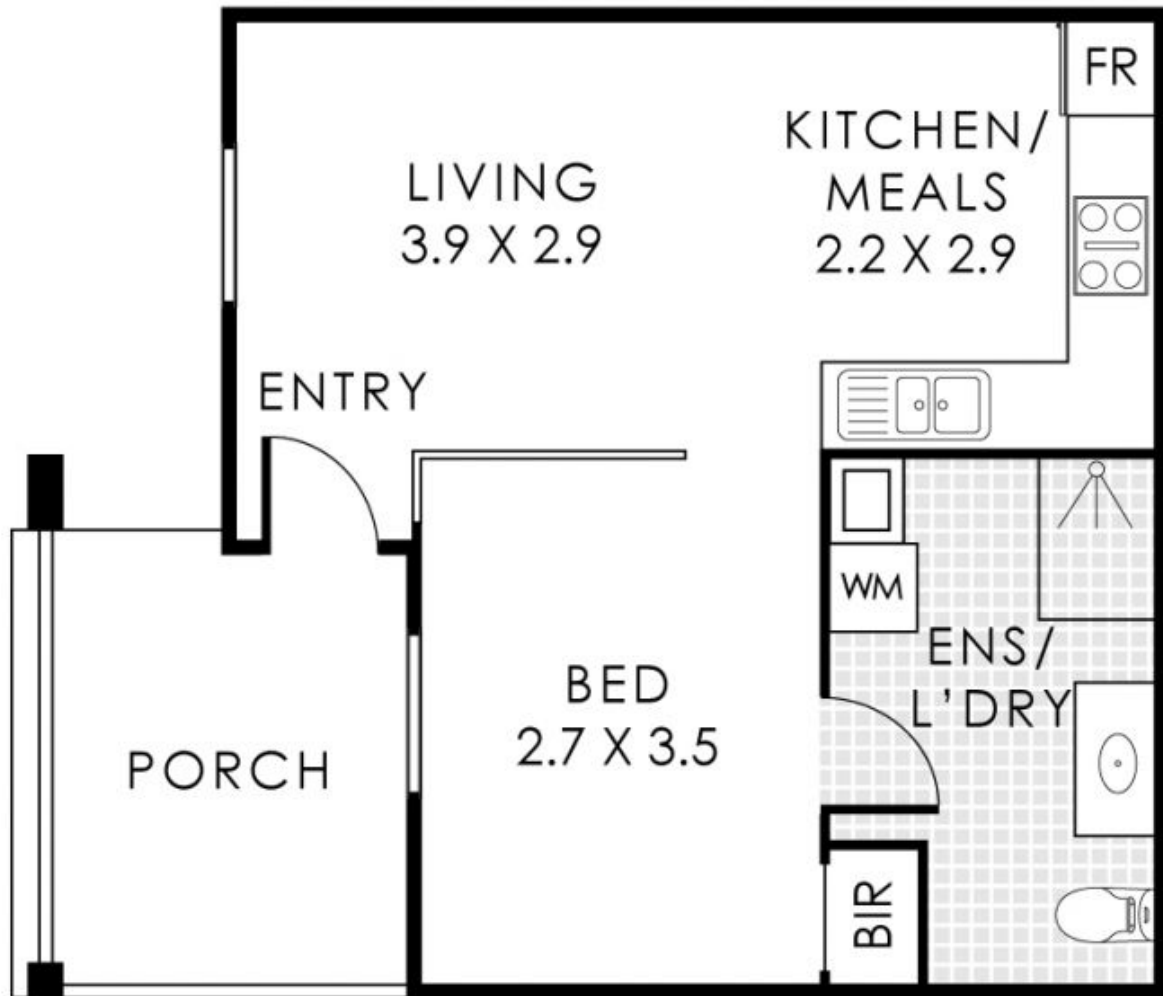
View

: <https://www.lauriekelly.com.au/sale/wa/eastern-suburbs/belmont/residential/apartment/7951312>



Kim Findlay
08 9277 4200

Don't miss this outstanding buying opportunity at 11/169



(NOT ACTUAL LOCATION)

11/169 Great Eastern Highway, Belmont

Residence 41m² | Porch 9m² | Carbay 12m²

Total Area 62m²



This floorplan is for illustration purposes only to show the layout of the property. Whilst every effort has been made to ensure the accuracy of this floor plan, all measurements and total area do not include or account for wall thickness or roof area under eaves. CTS Creative will not be held liable or responsible for any errors, omissions, misrepresentation or use of any information shown on this floor plan. Not to be used for any other purpose. www.ctscreative.com.au