



8/351 Orrong Road Kewdale WA

2 1 2

Super Stylish Apartment with lift

With the rise in popularity of apartment living this boutique complex of 8 is the benchmark of modern living. With secure gated access, 2 car bays and lift access life is carefree at 351 Orrong Road Kewdale - known as "Valencia Apartments".

Internally, this top floor (2nd floor) apartment is stylish and spacious amassing 62sqm of living space. It boasts modern fixtures and fittings, a large light filled living space that opens onto a sizable balcony (12sqm).

Internal features include:

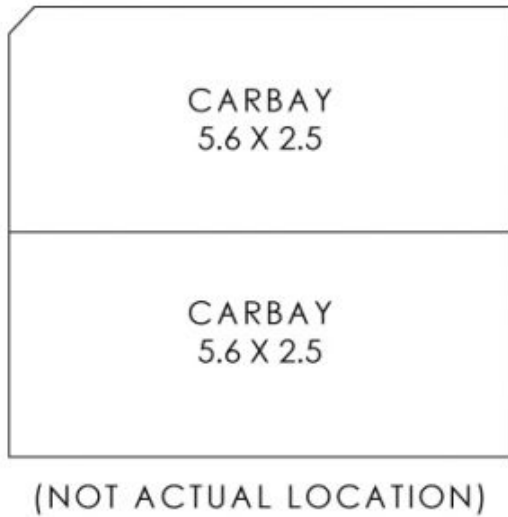
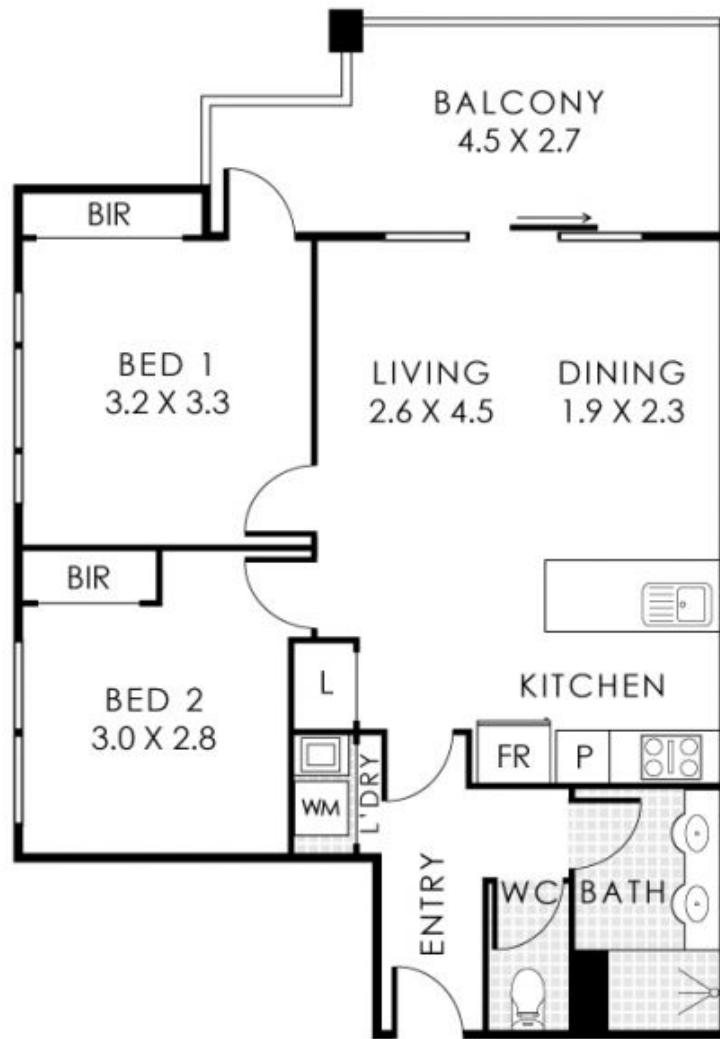
- ? Boutique complex of 8 built in 2010.
- ? Security access with lift access
- ? 2 bedrooms (built in robes) x 1 bathroom.
- ? Entry foyer

Building Size : 74 sqm

View : <https://www.lauriekelly.com.au/sale/wa/southern-suburbs/kewdale/residential/house/7951360>



Kim Findlay
 08 9277 4200



8/351 Orrong Road, Kewdale

Residence 62m² | Balcony 12m² | Store 6m² | Carbay 28m²
Total Area 108m²



This floorplan is for illustration purposes only to show the layout of the property. Whilst every effort has been made to ensure the accuracy of this floor plan, all measurements, and any other information shown are an approximate interpretation only. Measurements and total areas do not include or account for wall thickness or roof area under eaves. Clio Creative will not be held liable or responsible for any error, omission, misrepresentation or use of any information shown on this floor plan. Not to be used for any other purpose. www.cliocreative.com.au