

227 Hardey Road Belmont WA

3 2 2

You will love this fully renovated Brick and Tile character home on easycare block in super convenient location close to shops and swan river. With loads of room to move with two separate living rooms and for the entertainers front and rear entertaining zones. Circle this one as it is sure to fly out the door!

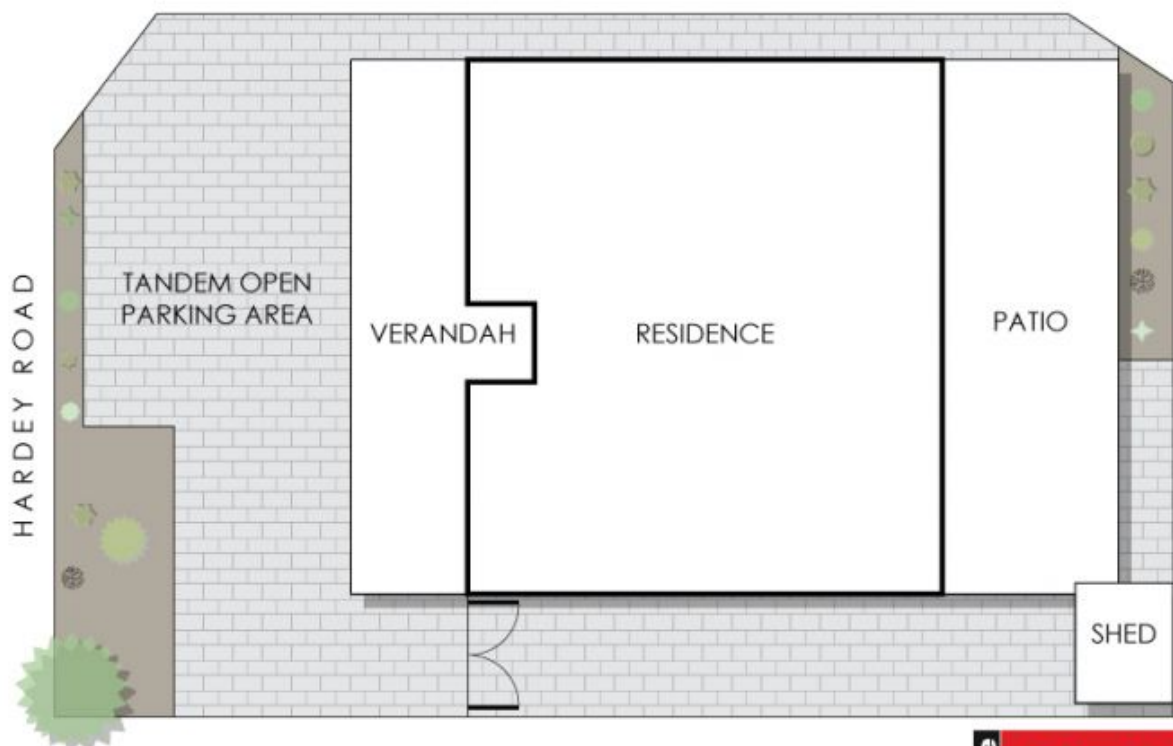
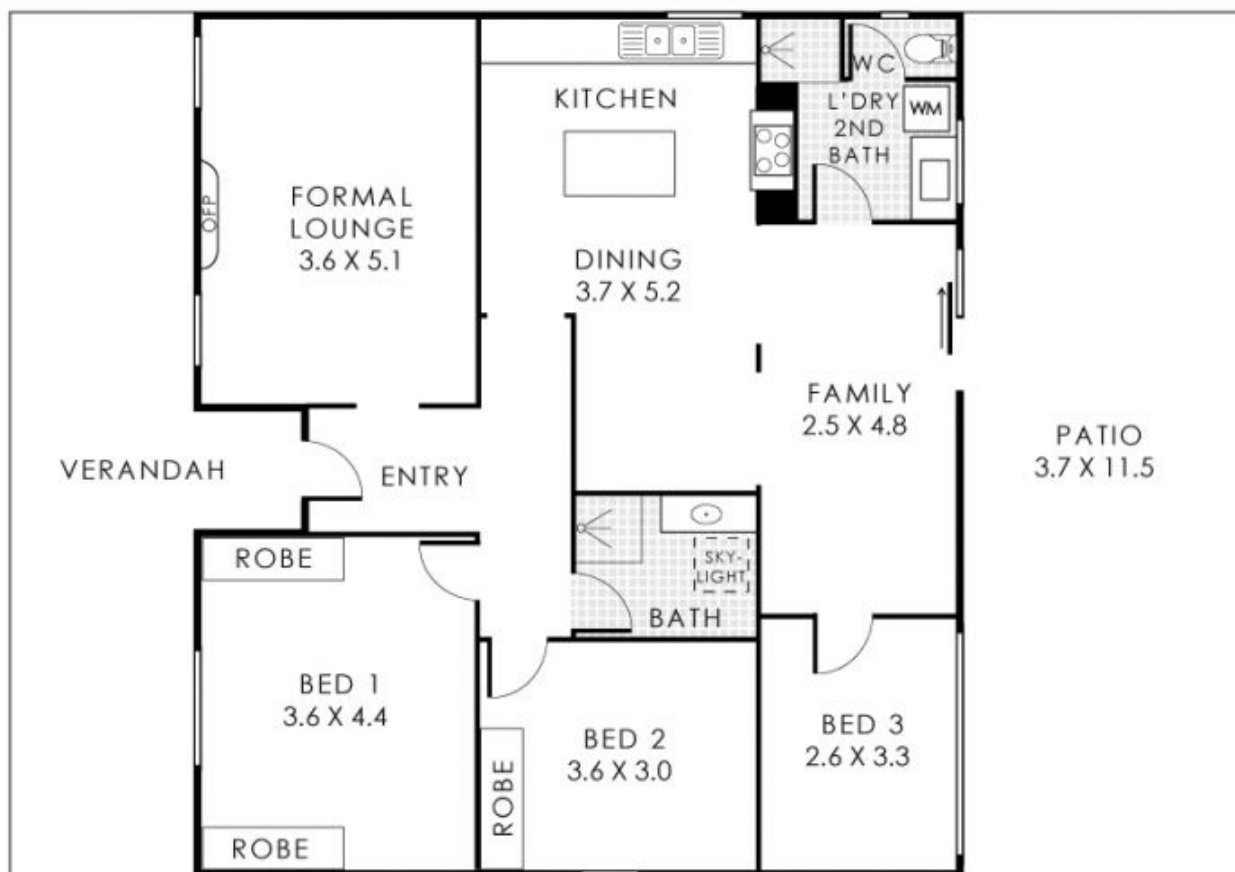
Features at a glance:

- ? 1960's Built Brick and Tile Character Home
- ? Large front porch - 30sqm the perfect spot to while away afternoon sunsets
- ? Formal lounge room with art deco open fireplace, gorgeous carpets and beautiful sheers.
- ? Large main bedroom with his and hers fitted wardrobes.
- ? Main bathroom recently renovated with semi frameless glass shower recess and stylish vanity.
- ? Recently renovated kitchen with island breakfast bar,

Building Size : 111 sqm
Land Size : 361 sqm
View : <https://www.lauriekelly.com.au/sale/wa/eastern-suburbs/belmont/residential/house/7975990>



Kim Findlay
08 9277 4200



227 Hardey Road, Belmont

Residence 111m² | Patio 43m² | Verandah 30m²

Total Area 184m² | Total Land Size 361m²



This floorplan is for illustration purposes only to show the layout of the property. Whilst every effort has been made to ensure the accuracy of this floor plan, all measurements, and any other information shown are on approximate interpretation only. Measurements and total areas do not include or account for wall thickness or roof area under eaves. Cibo Creative will not be held liable or responsible for any error, omission, misrepresentation or use of any information shown on the final floor plan. Not to be used for any other purpose. www.cibocreative.com.au