



32A Chester Street Belmont WA

4 2 3

Embrace convenience and comfort in this beautifully presented four-bedroom home, perfectly positioned in the heart of Belmont. Offering an exceptional blend of spacious indoor and outdoor living, this property is ideal for families, downsizers, and investors alike. Walking distance to lush parks, quality schools, the Belmont Forum Shopping Centre, the Belvidere Street Shopping Precinct and easy access to public transport and Great Eastern Hwy.

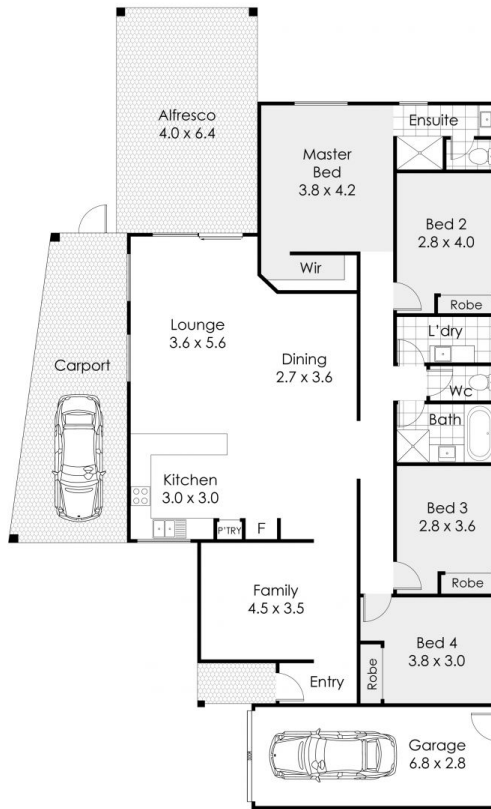
Step inside and discover the heart of this home: modern living spaces designed for comfort and effortless entertaining. The spacious open-plan kitchen boasts a functional U-shaped layout, which allows for seamless interaction with the adjoining lounge/dining room and creates an inviting atmosphere for gatherings. The master

Type : House
Land Size : 429 sqm
View : <https://www.lauriekelly.com.au/sale/wa/east-ern-suburbs/belmont/residential/house/8273206>



Daniel Kelly
08 9277 4200

[For full version visit the website](https://www.lauriekelly.com.au)



32a Chester Street, Belmont

This floor plan is not to scale.
 Dimensions are approximate and therefore should only be used for illustrative purposes.

	223 m ²
	4 Bed
	2 Bath
	2 Car