

**21 Belvidere Street Belmont WA**

3 1 4

Situated by the Belvidere Street Shopping Precinct.

In this sought-after location, combined with the Thriving Suburb Program - City of Belmont to revitalise Belvidere Street shopping, You love feature below:

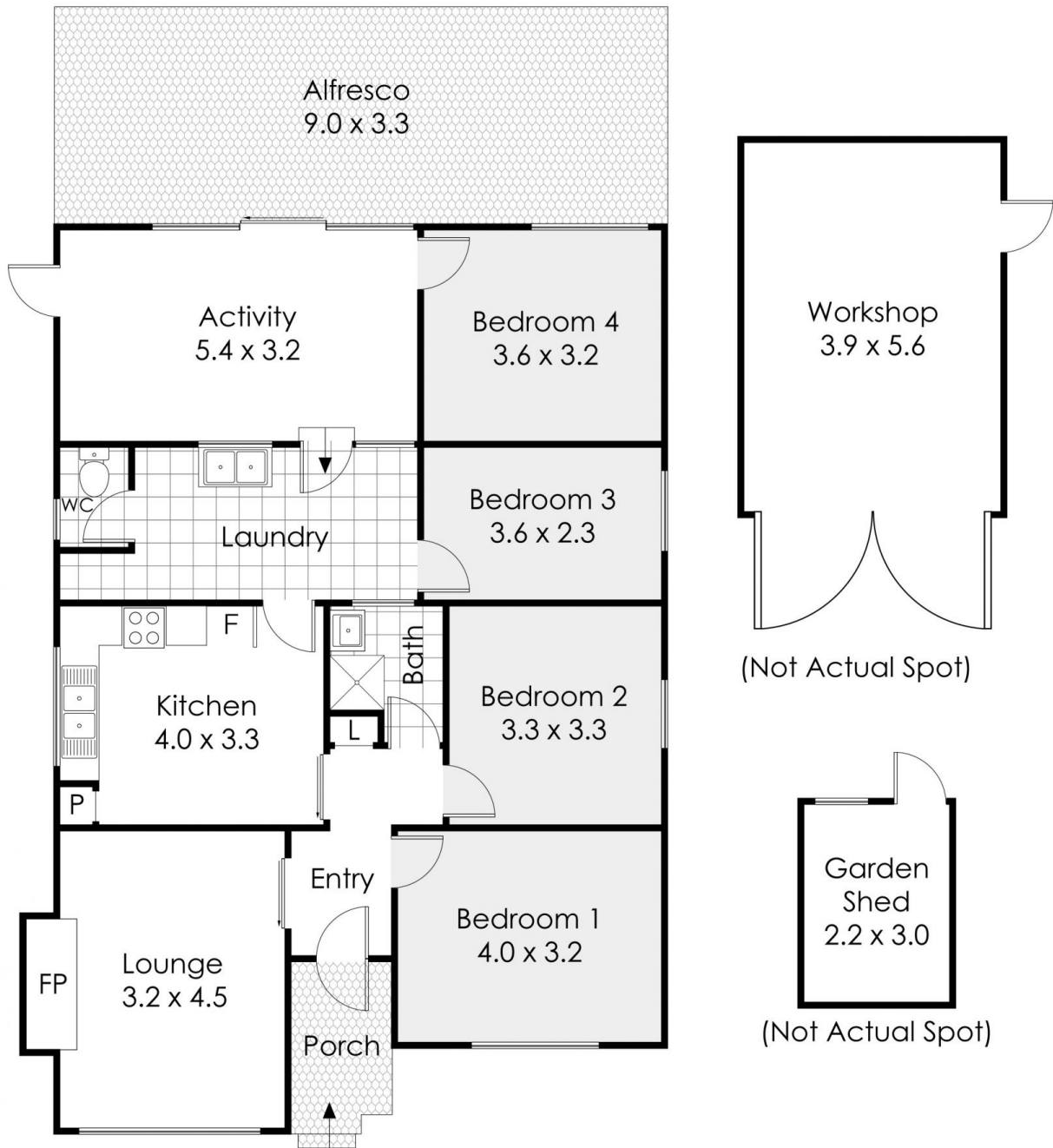
- Classic 1950's built - Family Home Cottage with extended living space.
- Formal Lounge with classic Jarrah boards, flooring and Air-conditioning
- 3 Private bedroom + optional room for a 4th.
- Activity room which opens onto the alfresco-entertaining area.
- Separate Kitchen & Dining area with a lot of storage.
- XL Workshop at the rear of the property.

[For full version visit the website](https://www.lauriekelly.com.au)

**Type** : House  
**Price** : \$640  
**Land Size** : 792 sqm  
**View** : <https://www.lauriekelly.com.au/lease/wa/eastern-suburbs/belmont/residential/house/8697669>



**Aileen Pearce**  
 (08) 9277 4200



## 21 Belvidere Street, Belmont

This floor plan is not to scale.  
Dimensions are approximate and therefore should only be used for illustrative purposes.

	179 m <sup>2</sup>
	4 Bed
	1 Bath
	4 Car